



# RS-LogScanner3DX

**RS-LogScanner3DX is RemaSawco's combined 3D and X-ray system for timber measurement. This combination measures the true shape of your logs and at the same time reveals the internal properties of the log. This means that you, already in the initial measurement, can choose to sort according to the product needs found later in the process. According to independent studies, the system offers the market's best measurement of diameter under bark, which gives you major competitive advantages through more efficient raw material utilization.**

## **TURNKEY SOLUTION – OR UPGRADE**

The 3D and X-ray equipment are assembled together in a fully functional radiation-protected container that is put into place in your facility with a single lift. If you already have a 3D measuring frame from RemaSawco and want to supplement this with X-ray functionality later, that is perfectly fine. Then the X-ray system is installed as a separate unit in close proximity to the 3D frame.

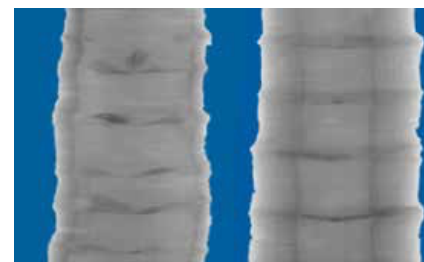
## **3D-FUNCTION**

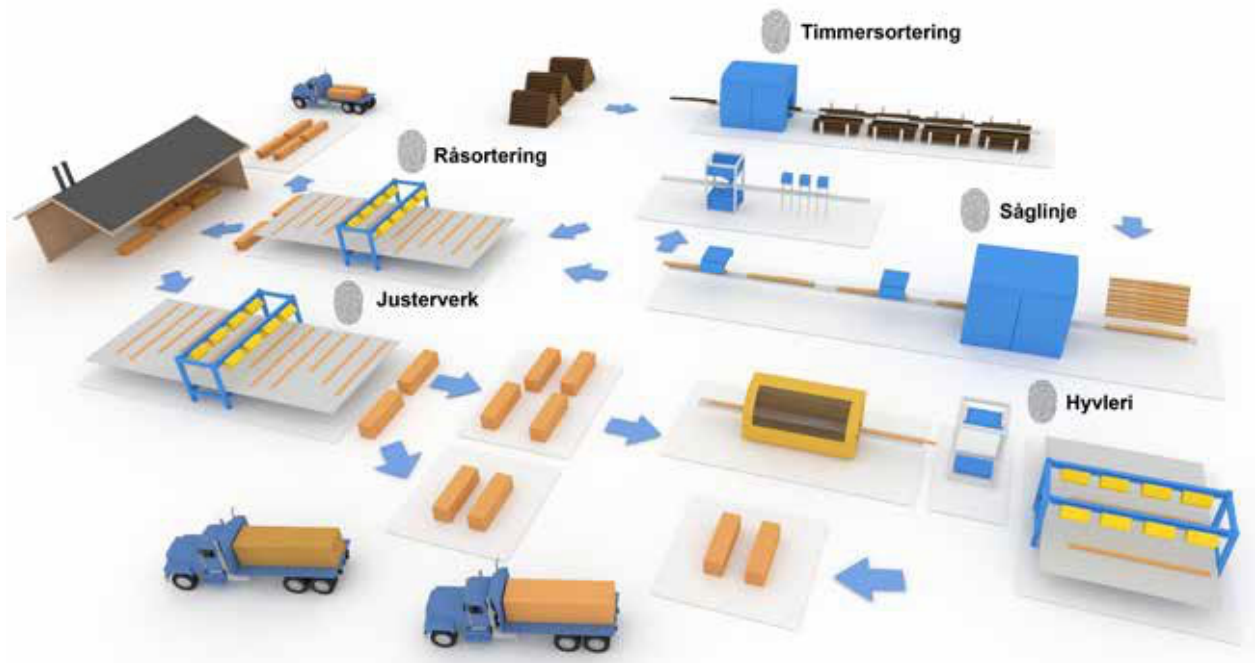
The system offers the market's most detailed 3D measurement, where the properties of the log are measured in detail with 12 robust industrial cameras. In total, hundreds of thousands of measurement points are recorded and a high-resolution description of the log's shape and bark properties is generated. The system can handle a very high scanning speeds, making it a matter of course in modern, advanced plants. Full measurement of the logs' makes it possible to calculate sweep, taper and ovality in a correct way, taking knots and damage on the surface in consideration. Thanks to the combination with the X-ray measurement, the system also generates the market's best measurement of the shape under bark, all year round, enabling a very precise classification of the timber. By combining the timber measurement with the optimization system RS-Opt, it is also possible to sort the timber directly on posting.

Calibration and service are easily handled by the operator without the need for expert help. It is straightforward to replace a measuring unit as no mechanical parts are affected by this.

## **X-RAY FUNCTION**

Using industrial X-ray technology with the absolute best resolution, the X-ray unit sees under the bark and all the way to the pith. The measurements provide information on diameter under the bark, knot type, knot volume, annual ring density, strength and heartwood diameter – characteristics that are decisive for the raw material's value as a salable product. By securing this data already at the log-sorting stage, new possibilities arise. By sorting the logs using the X-ray information, it is possible to more safely saw products according to specific requirements and properties and in addition make maximum use of the raw material. For example, you can have a log bin for carpentry blanks and one for unsorted timber or green knot logs. By sorting and sawing a volume that can be directly linked to a specific order, production and inventory costs can also be reduced. In addition, the X-ray system offers precise timber properties information that can be used for monitoring of different growth areas and suppliers.





## The digital sawmill. Evolved.

RemaSawco's goal is to have all products and systems interact seamlessly within the concept of The Digital Sawmill. This means that each component will not only perform its specific tasks, but also share its data with all other units. With this architecture, traceability and production supervision will be achieved, improving product value and efficiency for the end customer.